

Target Practice

Choose a specific area within the finish line or recycling area. Can you get all of your test objects to land on that spot?



More Turns

Increase the number of turns the wind must navigate.



Less Wind

Have testing objects cross the finish line at a decreased wind speed.



Heavier Objects

Change the testing objects to heavier items.



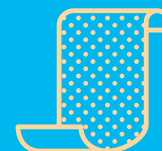
Bumpy Road

Have learners build on an uneven surface.



Added Friction

Include something like tape or sandpaper that adds friction for the testing objects to go over.



Reliable Design

Ensure the design works consistently by having three successful tests in a row.



Design a Different City Block

Give learners a different size building area. Try to make the building area longer or wider.



Skyscrapers

Make the building objects taller to represent skyscrapers. Have learners consider how the building height can affect the way the wind moves.